

# ***MultiDispenser***

- EINER für ALLE -

Kartuschengrößen

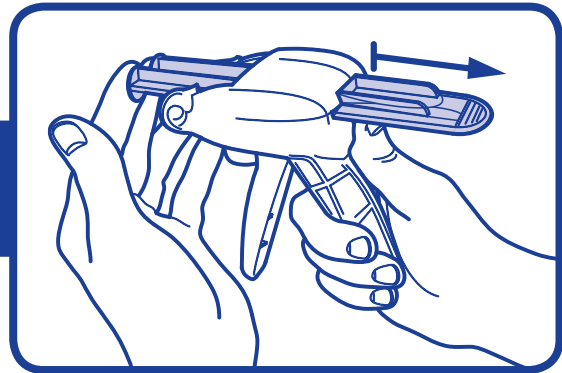
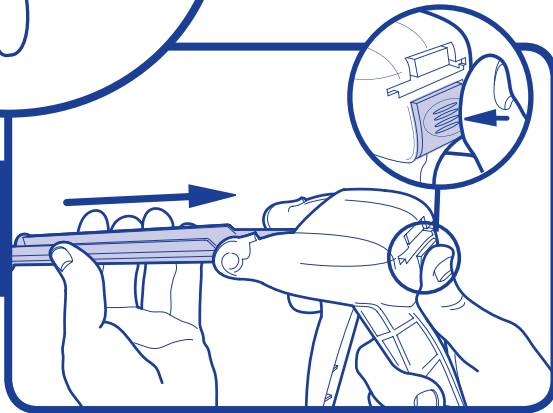
1:1, 2:1, 4:1, 10:1 sowie Typ 25 1:1

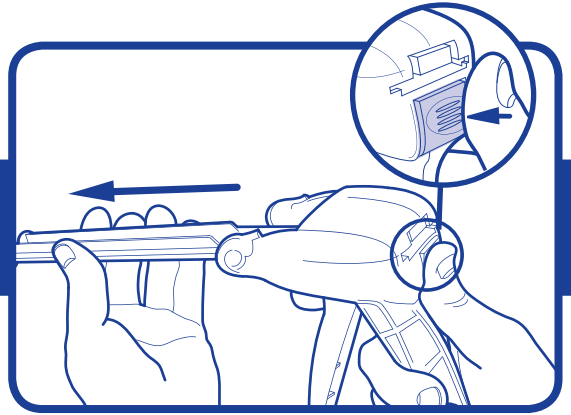
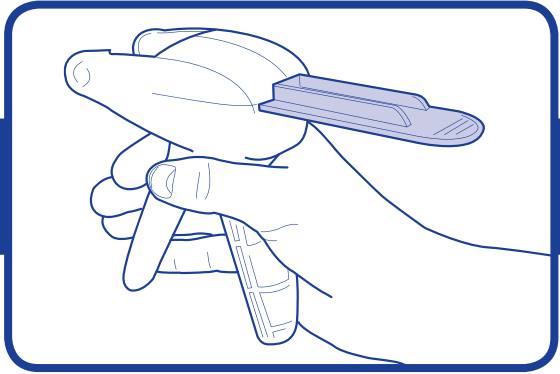




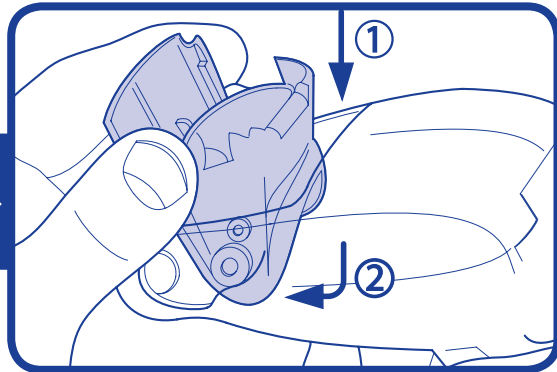
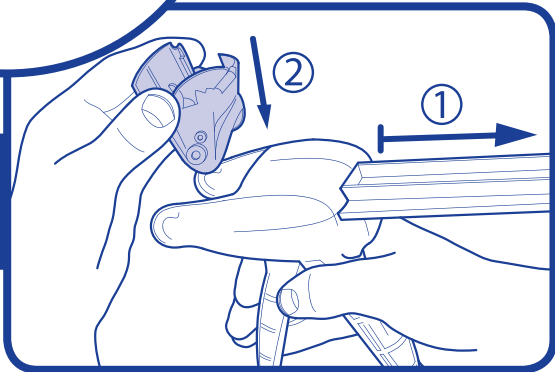
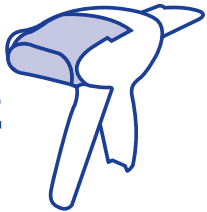
Bedienungsanleitung, bitte aufmerksam lesen.

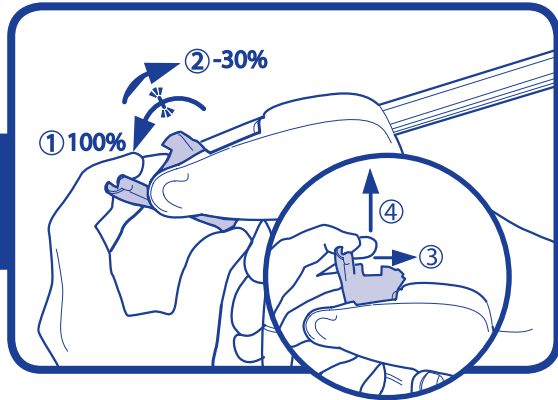
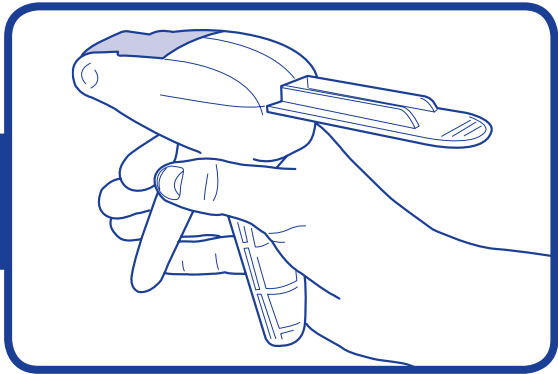
Dieser MultiDispenser eignet sich für Kartuschengrößen 1:1, 2:1, 4:1, 10:1 sowie Typ 25 1:1

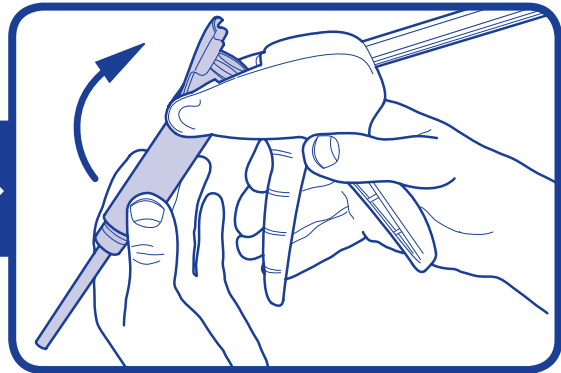
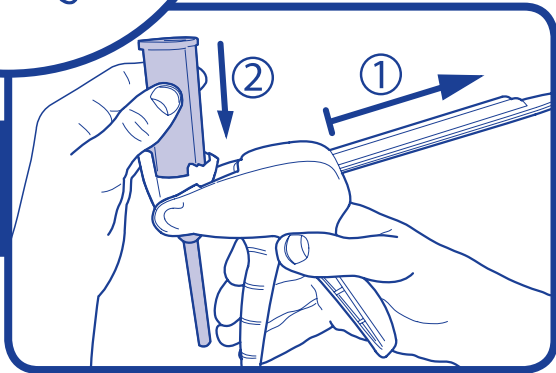
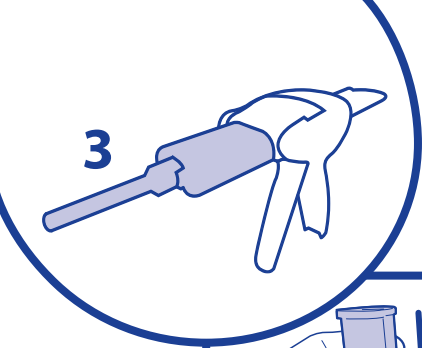


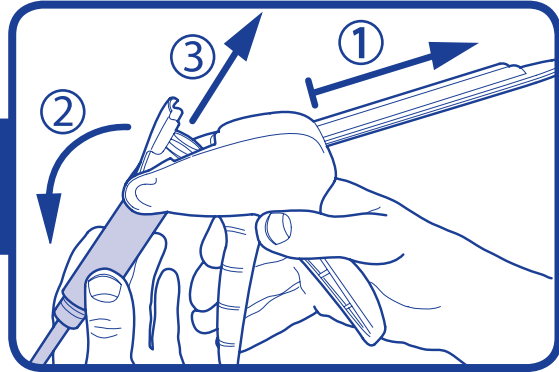
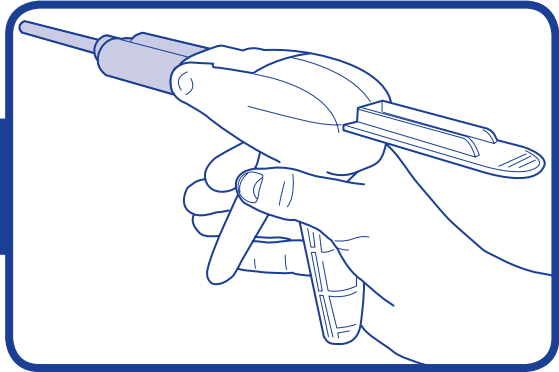


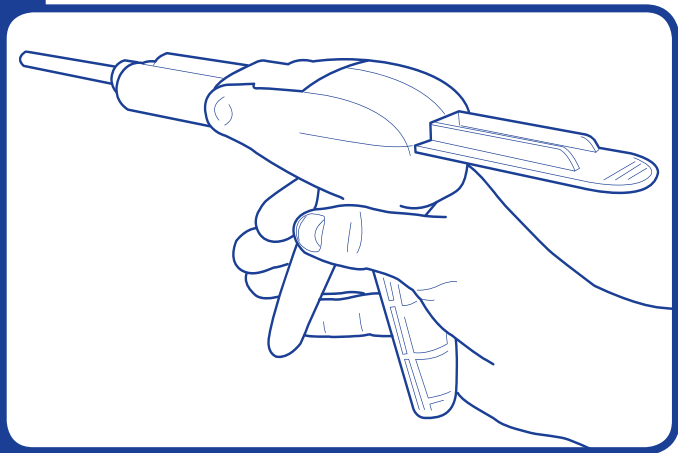
2











**Merz Dental GmbH**

Eetzweg 20 24321 Lütjenburg, Germany

Tel +49(0)4381/403-0

Fax +49(0)4381/403-403

[www.merz-dental.de](http://www.merz-dental.de)

EN ISO 13485