



Seitenzahn
Posterior
Posteriore
Postérieure



Formenkarte

Mould Chart

Tabella forme

Ficha de formas

Carte de formes

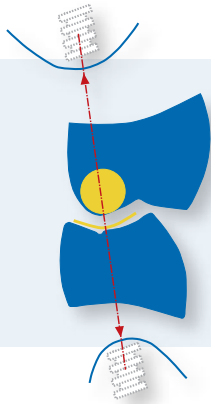
DeltaForm[®]

DeltaForm[®] CAD/CAM - Fertigung - manufacturing

Auf den Punkt gebracht

Exactly to the point

Tutti i punti al loro posto



Lingualisiert

Lingualized

Lingualizzata

Lingualisada

Lingualisé

Hohe Kaustabilität

High masticatory stability

Stabilità masticatoria elevata

Alta estabilidad masticatrice

Haute stabilité masticatrice

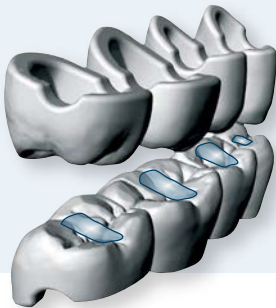
Geringe Horizontalschübe

Less horizontal forces

Spinte orizzontali minori

Fuerzas horizontales reducidas

Forces horizontales réduites



Mörser-Pistill-Prinzip - Selbstregulierende Okklusion - Einfache Logik des Einschleifens

The mortar pistil principle (cupola-dip) - Self-regulating occlusion - Simple logic of grinding

Principio „mortaio-pestello“ (superfici concave-convesse) - Occlusione autoregolante - La logica semplice della fresatura

Principio del mortero y la mano (cúpula y concavidad) - Oclusión auto regulada - Lógica sencilla en el ajuste oclusal

Principe du mortier-pilon (cuspidé-fosse) - Occlusion à autorégulation - Logique simple du meulage



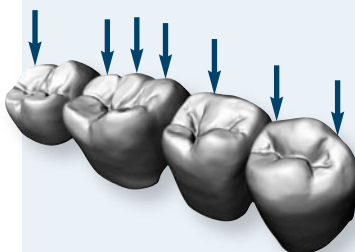
Moderate, geringe Höckerneigung von 20°-15°, distal abnehmend

Moderate, little cusp angle of 20°-15°, towards distal declining

Inclinazione moderata delle cuspidi, di 20°-15°, decrescendo distalmente

Moderada, ligera inclinación cuspidéa de 20°-15°, decreciente hacia distal

Inclinaison modérée faible des cuspidés de 20°-15°, décroissance distal



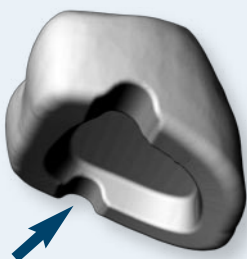
Patentierte Abrasionsfacetten, altersgerechte Kontur, geringes Einschleifen

Patent abrasion facets, age-based contour, less grinding

Faccette abrasive brevettate, contorni in funzione all'età, molaggio ridotto

Facetas de abrasión patentadas, perfil adecuado a la edad del paciente, requieren poco tallado

Facettes d'abrasion brevetées, contour adapté à l'âge du patient, faible meulage



Patentierter Preventive Shift Groove (PSG[®]) - An den Kieferkamm angepasste basale Kontur

Patent Preventive Shift Groove (PSG[®]) - To the ridge fitted basal contour

Preventive Shift Groove (PSG[®]) brevettato - Contorno basale adattato alla cresta mascellare

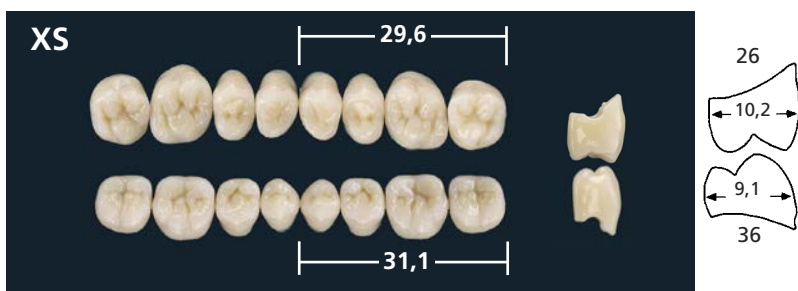
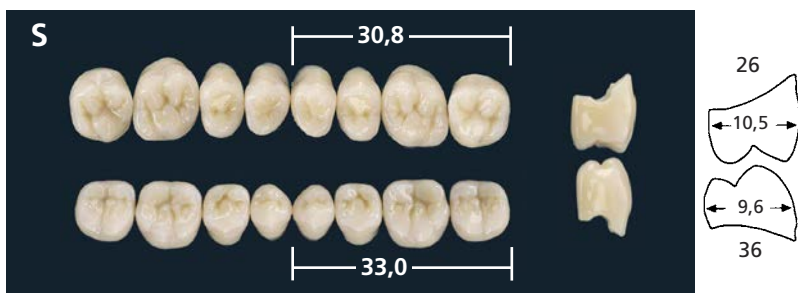
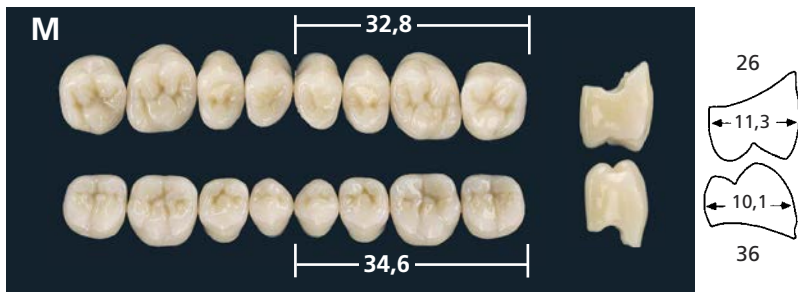
Sistema patentado Preventive Shift Groove (PSG[®]) - Perfil basal adaptado a la cresta alveolar

Preventive Shift Groove (PSG[®]) brevetée - Contour basal adapté à la crête

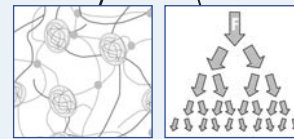
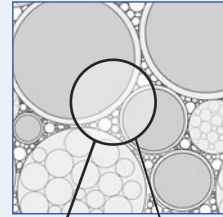
- produzione - fabricación - fabrication
 A punctero Mise au point



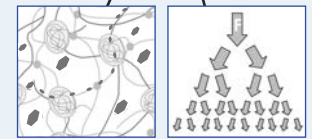
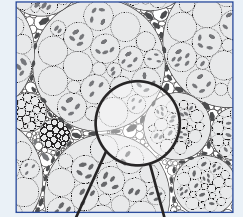
DeltaForm® / DeltaForm® HD



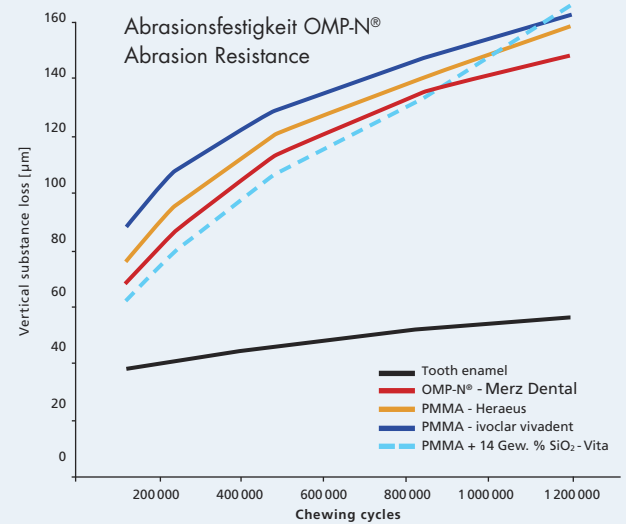
DeltaForm®
OMP-N® Organic Modified
 Polymer-Network



DeltaForm® HD
HMP-N® Highly Modified
 Polymer-Network

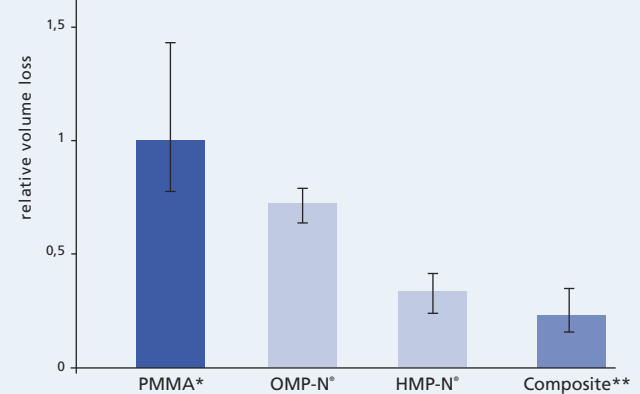


inorganic filler



Graph based on Ghazal et al.: Two-body wear of resin and ceramic denture teeth in comparison to human enamel. Dental Materials 4 (2007) 24, p.502-507

Abrationsvergleich gegenüber Al₂O₃ - Antagonist
 Comparison of wear resistance using Al₂O₃ as antagonist
 Kausimulation 125 000 Zyklen
 Chewing simulation 125 000 cycles



* Average value taken from 4 commercially available polymethyl methacrylates
 ** Average value taken from 4 commercially available composite materials

Source: Merz Dental, R&D

Drei-Schicht-Aufbau



Three-layer set-up
 Struttura a tre strati
 Estructura de tres capas
 Structure à très couches

16 V-Farben/shades/colori/colores/couleurs A1-D4
 4 Bleach-Farben/shades/colori/colores/couleurs BL1 - BL4

Artikulationstabelle DeltaForm®

Cross reference chart · Tabella di articolazione · Tabla de articulación · Table d'articulation

inTEGRAL®	artegral®/artegral® Life	inTEGRAL®	artegral®/artegral® Life	DeltaForm® / HD
CL CM CS	CL CM CS	UCL UCM UCS	UCL UCM UCS	XL/L M S/XS
BL BM BS	BXL BL BM BS BOL BOM BOS BIL BIM BIS	UBLL UBL UBM UBS	UBXL UBL UBM UBS UBIL UBIM UBIS UBIL UBIM UBIS	XL XL/L M S/XS XL/L M S/XS XL/L M S
IL IM IS	IXL IL IM IS ITL ITM ITS	UIL UIM UIS	UBXL UIL UIM UIS UIL UIM UIS	XL L M S/XS L M S/XS
<i>Selection</i> EDITION <i>Polystar®</i> <i>life</i>		<i>Selection</i> EDITION <i>Polystar®</i> <i>life</i>		DeltaForm® / HD
CL2 CM2 CM4 CM6 CS2		UL2/UL4 UM2/UM4 UM2/UM4 UM6/US2 US2		XL/L L/M M/S M/S S/XS
BL1 BL2 BM2 BM4 BM6 BS2 BIL2 BIM2 BIM4 BIM6 BIS2		UL2 UL2/UL4/UM4 UM2/UM4 UM2/UM4 UM6/US2 US2 UL2/UL4 UM2/UM4 UM2/UM4 UM6/US2 US2		XL/L XL/L L/M M/S S/XS XS M/S M/S M/S S/XS XS
IL2 IM2 IM4 IM6 IS2		UL2/UL2/UL4 UM2/UM4 UM2/UM4 UM6/US2 US2		L/M L/M M/S M/S S/XS

Formenkarte Frontzahn ▶

Mould Chart anterior
Tabella forme anteriore
Ficha de formas anterior
Carte de formes antérieure
REF 1090171



Sicherheitsdatenblatt auf Anfrage erhältlich.
Safety data sheet available on request.
Fiche de données de sécurité disponible sur demande.
Scheda dati di sicurezza disponibile su richiesta.
Puede solicitarse la ficha de datos de seguridad.



Merz Dental GmbH
Kieferweg 1, 24321 Lütjenburg, Germany
Tel + 49 (0) 4381/403-0
Fax + 49 (0) 4381/403-403
www.merz-dental.de
EN ISO 13485

