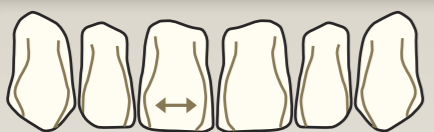


CBI® SYSTEM

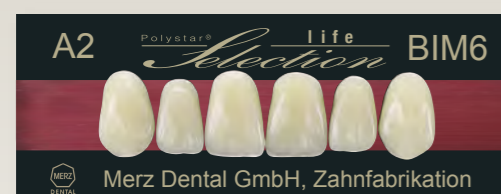
C



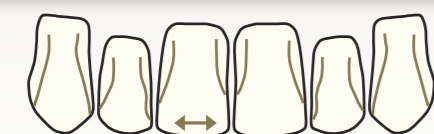
B



BI



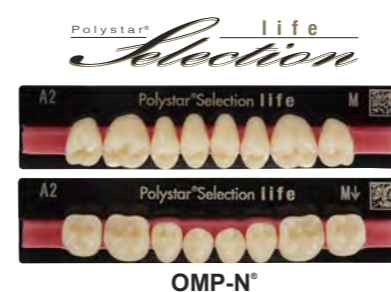
I



Polystar® life Selection



	Selection life	Selection 2 life
CL 2	UL 2 / UL 4	XL / L
CL 3	UM 2 / UM 3 / UM 4 / UM 8 / UM 10	L / M
CM 2	UM 2 / UM 3 / UM 4 / UM 8 / UM 10	L / M
CM 4	UM 4 / UM 2	M
CM 6	UM 6 / US 2	M / S
CS 2	US 2 / US 4	S
BL 2	UL 2 / UL 4 / UM 4	XL / L
BM 2	UM 2 / UM 3 / UM 4 / UM 8 / UM 10	L / M
BM 3	UM 2 / UM 3 / UM 4 / UM 8 / UM 10	M
BM 4	UM 4 / UM 2	M
BM 6	UM 6 / US 2	M / S
BS 2	US 2 / US 4	S
BIL 1	UL 2	XL
BIL 2	UL 2 / UL 4	L
BIM 2	UM 2 / UM 3 / UM 4 / UM 8 / UM 10	L / M
BIM 4	UM 4 / UM 2	M
BIM 6	UM 6 / US 2	M / S
BIS 2	US 2 / US 4	S
IL 2	UL 2 / UL 4	L
IM 2	UM 2 / UM 3 / UM 4 / UM 8 / UM 10	L / M
IM 4	UM 4 / UM 2	M
IM 6	UM 6 / US 2	M / S
IS 2	US 2 / US 4	S



1092398/2025-02

Sicherheitsdatenblatt auf Anfrage erhältlich.
Safety data sheet available on request.
Fiche de données de sécurité disponible sur demande.
Scheda dati di sicurezza disponibile su richiesta.
Puede solicitarse la ficha de datos de seguridad.

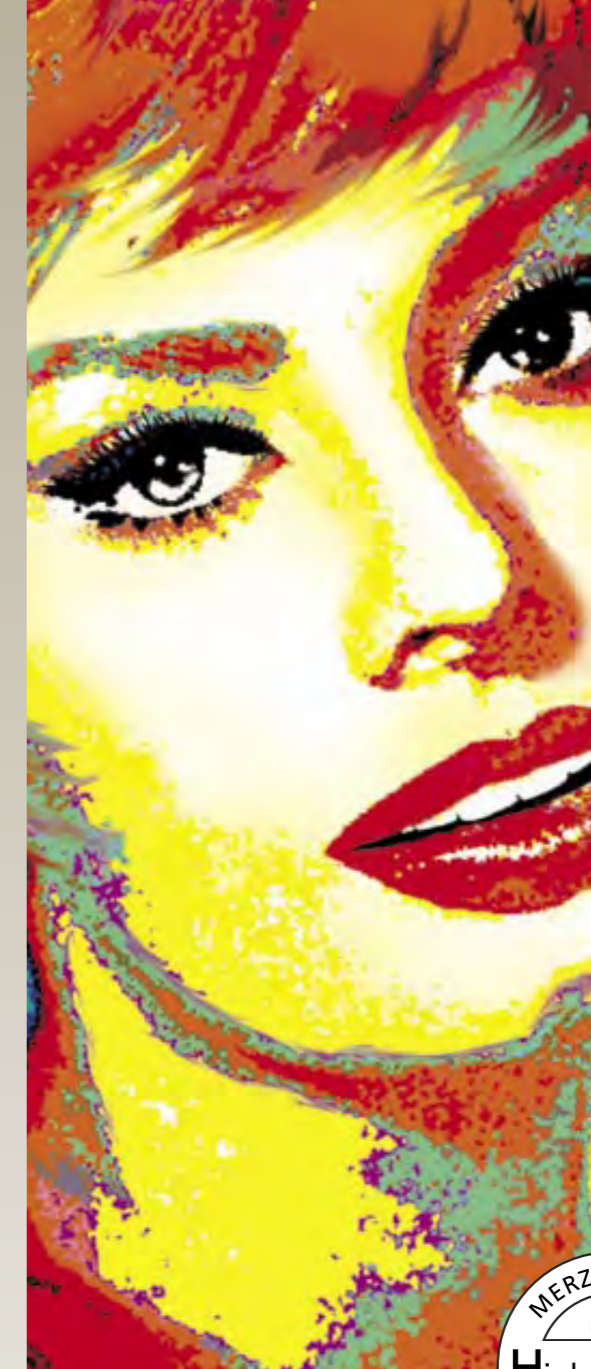
EN ISO 22112



Merz Dental GmbH
Kieferweg 1, 24321 Lütjenburg, Germany
Tel + 49 (0) 4381 / 403-0
Fax + 49 (0) 4381 / 403-403
www.merz-dental.de
EN ISO 13485

CE 0482

The Modern Art of Teeth

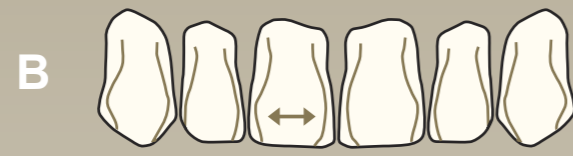


CBI® SYSTEM



Polystar® Selection





CL2 51,3 12,5 9,1 43,0	
CL3 50,8 11,6 9,4 41,2	
CM2 47,3 10,0 8,6 39,0	
CM4 45,1 10,2 8,3 37,0	
CM6 46,8 9,5 8,6 38,0	
CS2 41,7 8,8 7,5 35,0	

BL2 48,2 11,7 9,1 40,0	
BM2 47,6 11,1 9,0 39,0	
BM3 46,4 9,8 8,7 41,6	
BM4 45,7 10,8 8,6 37,0	
BM6 43,3 10,6 8,0 35,0	
BS2 39,8 9,2 7,5 32,0	

BIL1 53,0 13,1 9,7 46,5	
BIL2 46,2 11,2 8,7 39,0	
BIM2 46,4 10,2 8,1 38,0	
BIM4 45,6 10,3 8,3 38,0	
BIM6 44,4 10,0 8,2 37,0	
BIS2 42,2 9,8 7,7 35,0	

IL2 47,2 10,0 8,6 39,0	
IM2 47,7 10,2 8,9 39,0	
IM4 45,5 10,4 8,4 39,0	
IM6 44,6 9,4 8,1 37,0	
IS2 42,2 8,8 7,7 35,0	

US4 33,6 8,7 5,0	
----------------------------------	--

US2 35,0 9,2 5,0	
----------------------------------	--

UM10 35,8 8,3 5,6	
-----------------------------------	--

UM8 35,6 9,0 5,3	
----------------------------------	--

UM6 35,1 9,3 5,3	
----------------------------------	--

UM4 37,6 9,8 5,6	
----------------------------------	--

UM3 37,4 10,9 5,6	
-----------------------------------	--

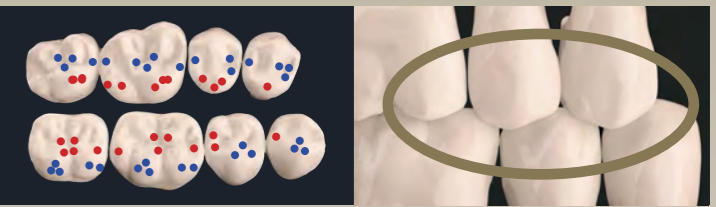
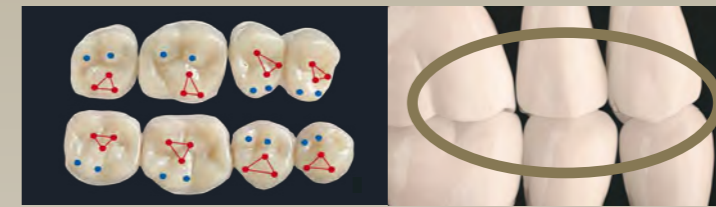
UM2 35,5 9,3 5,2	
----------------------------------	--

UL4 38,0 10,5 5,3	
-----------------------------------	--

UL2 38,6 11,5 5,7	
-----------------------------------	--

Polystar® *life* Selection

Polystar® *2life* Selection



S 29,2	
30,2	

S 28,9	
30,6	

M 31,0	
32,2	

M 30,6	
32,4	

L 32,7	
34,0	

L 32,3	
34,3	

XL 34,6	
35,8	

XL 34,0	
35,9	

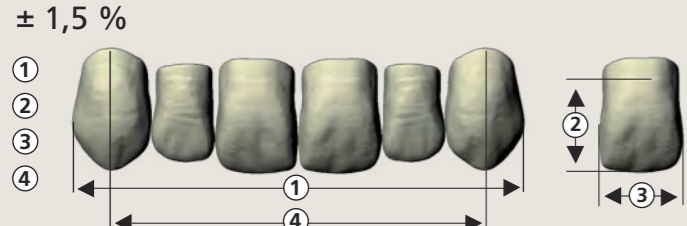
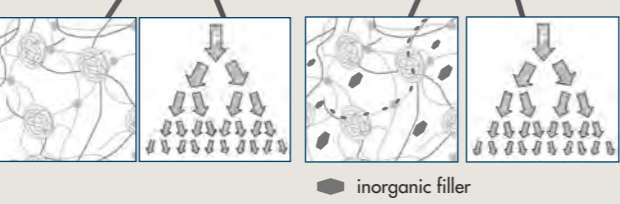
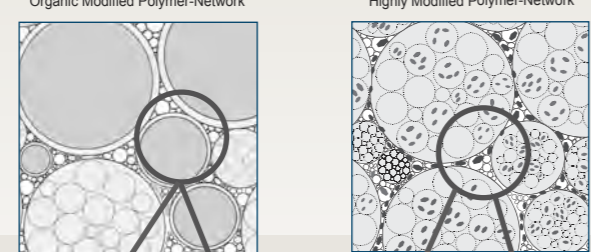


Shade Guide REF 1030263 A1-D4, BL1-BL4

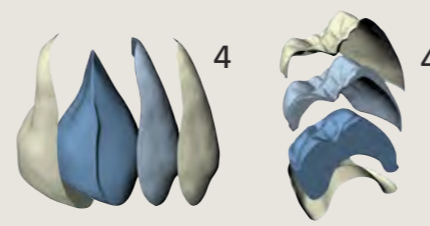
SEITENZÄHNE
POSTERIORES / POSTÉRIEURES / POSTERIORI / POSTERIORES

OMP-N®
Organic Modified Polymer-Network

HMP-N®
Highly Modified Polymer-Network



AST
Active
Shade
Technology



PSG®
Patented
Preventive
Shift Groove

XL 26 ←11,0→ ←10,3→ 36	L 26 ←10,3→ ←9,6→ 36	M 26 ←9,8→ ←9,0→ 36	S 26 ←9,2→ ←8,6→ 36
--	--------------------------------------	-------------------------------------	-------------------------------------

XL 26 ←9,7→ ←9,3→ 36	L 26 ←9,3→ ←8,9→ 36	M 26 ←8,7→ ←8,3→ 36	S 26 ←8,2→ ←7,8→ 36
--------------------------------------	-------------------------------------	-------------------------------------	-------------------------------------