

The Modern Art of Teeth



Polystar®

life

Selection

NEW!

The next high level generation

Polystar® *Selection* HD
Polystar® *2life* HD
Highly Modified Polymer-Network®



Polystar®

life

Selection



.... with a living soul

The most brilliant Polystar® ever!

- The Polystar® Selection life tooth line is based on the successful classic Polystar® Selection EDITION. However, impresses with a new shade formula and even more sophisticated aesthetics, with the same variety of moulds and the usual contemporary, universal form and function.
- The latest CAD/CAM technology (**AST** - Active Shade Technology) in mould making creates a multi-complex layering with individual color differences in natural brilliance and a greater depth effect. Particularly noteworthy are the subtle and multi-faceted mamelons, which, depending on the light penetration, achieve a different and at the same time natural effect.



The focus is on the patient



■ The Polystar® Selection life tooth line offers solutions for all prosthetic tasks. **This high-quality, anatomically moulded, multilayer tooth line of the latest generation** is excellently suited for the best agers of the more discerning patient clientele.

Polystar® *life*

The latest CAD/CAM technology **AST** (Active Shade Technology) enables a multi-complex layering, individual shade difference in natural brilliance, with more depth effect.


- The new shade formula, in addition to the brilliant layering technology, ensures shade fidelity to the shade guide
- Extraordinary effects thanks to **AST** (Active Shade Technology)
- 4-layer anteriors, 4-layer posteriors
- Optimum shade matching to veneers by avoiding colored tooth neck materials
- Reinforcement of the incisal edge on the flanges (chameleon effect)
- Matching shade guide for the Polystar® Selection life

INDICATIONS



CE 0482





Polystar®

l i f e

Selection

ANTERIORS

- Subtle and multi-faceted mamelons provide individuality depending on the light penetration
- Exceptional effects thanks to **AST** (Active Shade Technology)
- Efficient range of moulds and sizes according to the patented **CBI® system**
- Optimization of the chameleon effect by reinforcing the translucent incisal portion

The new shade formula and the multi-complex layering scheme provide the anteriors with exceptional intensity, between **natural morphology** and excellent light dynamics. The age-appropriate moulds and the harmonious shade gradient enable universal use in all prosthetic anterior solutions. Cleverly inserted effects underline the individual character and make each anterior tooth restoration appear unique.





Polystar® life
Selection

with low cusps and the new layering looks like an age-appropriate tooth with traces of abrasion. The semi-anatomical, contemporary all-rounder in tooth-to-tooth occlusion.

Polystar® 2life
Selection

The modern, narrow posterior for classical and system-oriented tooth-to-two-tooth prosthetics, with more pronounced cusps and fissures, gives the occlusal appearance a natural look thanks to the multi-complex layering of the incisal edge and occlusal depth effect. With the smaller transverse width, this posterior mould offers more space for the tongue.

Polystar® *Selection* **life**

Polystar® *Selection* **2life**



POSTERIOURS

- 2 material variants Polystar® Selection life / Polystar® Selection 2life made of **OMP-N®** and Polystar® Selection life HD / Polystar® Selection 2life HD made of **HMP-N®**
- The natural shade gradient of the fissure zones increases the shade intensity even on abraded occlusal surfaces
- Multi-complex layering ensures occlusal depth
- Occlusal grinding reserve due to sufficient enamel
- Preventive Shift Groove (**PSG®**) prevents twisting and tilting during wax-up

The Polystar® Selection life tooth line offers two posterior moulds, the **Polystar® Selection life posterior** as a tooth-to-tooth set-up and the **Polystar® Selection 2 life posterior** with a classical tooth-to-two-tooth set-up. The new type of layering of both posterior tooth moulds enhances the depth effect of the naturally designed semi-anatomical occlusal surfaces and combines the visual appearance with function and morphology.



THE CBI® SYSTEM

Based on the research results measuring anterior teeth on fully dentulous patients by Prof. Dr. Siebert (Free University of Berlin, now Charité), Merz Dental developed an innovative and recognised mould terminology, the patented **CBI® System**.

Polystar® *life*

Selection

C-mould

cervical emphasized
striking, firm, masculine



B-mould

body emphasized
harmonious, neutral



BI-mould

body emphasized
harmonious, neutral



I-mould

incisal emphasized
grace, elegance, feminine





Polystar® *life*

Selection

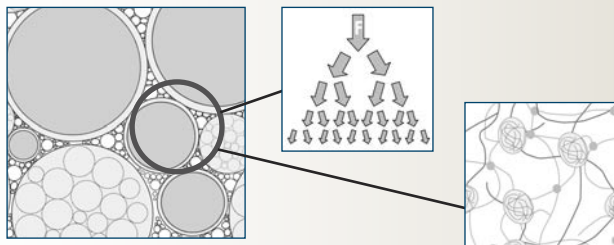
THE OPTIMUM DENTAL MATERIAL FOR EVERY CASE

OMP-N® & HMP-N®

- Brilliant light dynamics enable the combination of OMP-N® / HMP-N®
- Hard-wearing and abrasion resistant
- High elasticity, shock absorbing the impact and shear forces on the tooth, no splintering (chipping)
- Biocompatible, tissue friendly, plaque resistant
- Strong bond to PMMA based denture base material. Homogeneous PMMA layers, therefore easy processing when completing the denture
- Easy to process and polish
- Color stable, highly cross-linked, chemically- and temperature resistant

Special features HMP-N®

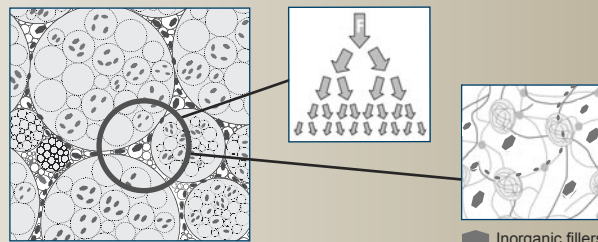
- HMP-N® is a dental material developed for implant- and periodontal-supported prosthetics with biomimetic properties learned from nature
- Homogeneous structure with fine crystalline fillers for proven optimal wear and abrasion resistance, for better vertical support
- Self-regulating biomimetic adaption reduces hyperbalance contacts through individual functional gravure and promotes the denture familiarization phase and acceptance by the patient



OMP-N[®] Organic Modified Polymer-Network

Cross-linked macromolecule structures in the submicroscopic range occupy the spaces between larger polymer beads in the chemical bond, which also reduces the proportion of monomer used in tooth production.

High elasticity, no splintering thanks to the formulation free of fillers and fibres. An integrated shock absorber compensates for the forces acting on the tooth and the denture base area is relieved. **OMP-N[®]** presents a very good, plaqueresistant surface compaction after polishing, even with conventional polishers, polishing wheels and polishing agents.

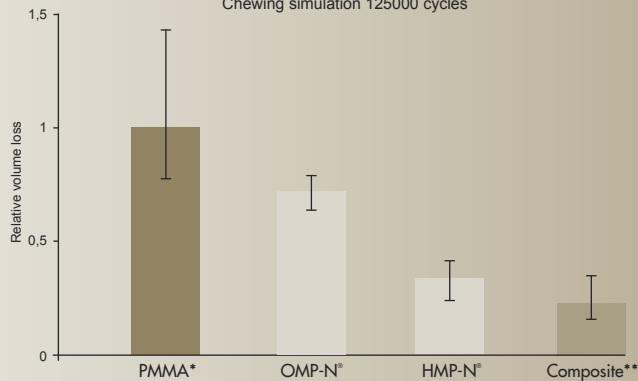


HMP-N[®] Highly Modified Polymer-Network

HMP-N[®] is a dental material developed for implant- and periodontal-supported prosthetics with biomimetic properties learned from nature.

Thanks to its homogeneous structure with extremely fine crystalline fillers, the Highly Modified Polymer Network (HMP-N[®]) offers a balanced combination of abrasion resistance, aesthetics and function.

Comparison of wear resistance using Al₂O₃ as antagonist
Chewing simulation 125000 cycles



* Average value taken from 4 commercially available polymethyl methacrylates
** Average value taken from 4 commercially available composite materials

Source: Merz Dental, R&D



Polystar® *life*

Selection

SHADE GUIDE

Shade communication between dentist and dental technician is of central importance. Only a reliable, proven key can accomplish this important task.

The A-D Shade Guide enables dentists and dental technicians to work with the proven A-D shades as well as with the 4 bleach shades: durable, reliable and with high shade accuracy.

- The material and layering of the teeth in the Shade Guide correspond to the original acrylic teeth made of OMP-N® material
- Shade deviations are therefore reduced to a minimum



REF 1030263



Polystar®

life

Selection



Merz Dental GmbH Kieferweg 1 24321 Lütjenburg, Germany Tel +49 (0) 4381 / 403-0 Fax +49 (0) 4381 / 403-403

www.merz-dental.de

1092473 / 2023-11

Merz Dental is certified according to EN ISO 13485 and thus offers the security and advantages of a future-orientated quality management system.