



## Vinyl Open Air

The Vinyl Open Air is a real eye-catcher and the only completely open scanner of the Vinyl series from smart optics. Its 180° opening offers the user enormous space for inserting the models during daily routines. Despite the missing lid, the productivity of the Vinyl series is also ensured with the Vinyl Open Air.

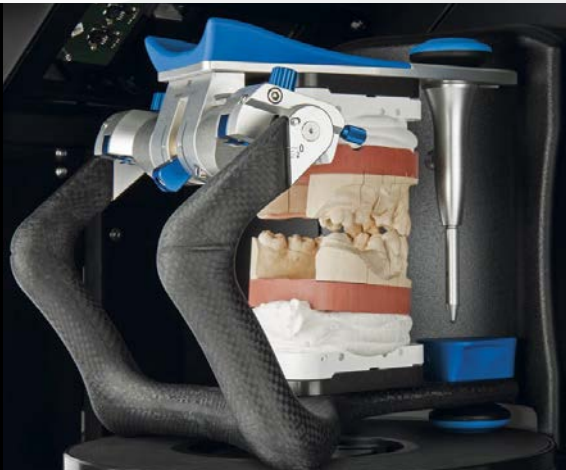
- ✓ Fully automated Z-axis
- ✓ dental Scan
- ✓ Texture scan monochrome
- ✓ secondDie
- 🔑 multiDie
- 🔑 multiCase
- ✓ Touchscreen
- ✓ Virtual articulator
- ✓ Texture scan color
- ✓ Universal mode
- 🔑 Triple Tray® impression scan



Device information	
Dimension <sup>(B × H × T)</sup>	455 × 430 × 420 mm
Weight	23 kg
Interfaces	1 × USB, 1 × IEC connector
Power supply	100-240 VAC, 50/60 Hz
Warranty	36 months

Measurement	
Measurementfield <sup>(X × Y × Z)</sup>	80 × 60 × 85 mm
Accuracy <sup>(according to ISO 12836)</sup>	6 µm
Resolution	1.3 MP

Measurement time		
Complete jaw	Scanning	16 sec
	Matching	13 sec
	Total	29 sec
single tooth	Scanning	33 sec
	Matching	08 sec
	Total	41 sec
3-unit bridge	Scanning	45 sec
	Matching	22 sec
	Total	67 sec



## For the industrious Vinyl Open Air

- ✓ **Open**  
Fast working speed thanks to targeted ease of operation
- ✓ **Modular**  
High range of functions at a moderate entry-level price
- ✓ **Future-proof**  
Ideal for beginners who want to expand later on



The Vinyl Open Air is a real eye-catcher and the only completely open scanner of the Vinyl series from smart optics. Its 180° opening offers the user enormous space for inserting the models during daily routines. Despite the missing lid, the productivity of the Vinyl series is also ensured with the Vinyl Open Air.

The Vinyl Open Air is the most affordable model in the Vinyl series, although numerous features are already included. The articulator scan is, of course, possible at no additional costs. The secondDie scanning strategy and both the monochrome and the color texture scan can also be used by default. The Vinyl Open Air is therefore equipped with features that allow a large number of applications to be scanned without any difficulties.

In addition to the basic configuration, it is up to the user to decide which modules are to be purchased at a later date. With modules such as the Triple Tray® impression scan and multiDie, the spectrum of options can be expanded quickly and easily.

Like all devices in the Vinyl series, the Vinyl Open Air also impresses by its easy handling. It is equipped with an innovative touch display, which increases the user's operating comfort and accelerates the working speed by shortening the work paths. The innovative Z-axis automatically moves the object to be scanned to the correct height, so that the user only has to intervene in the scanning process in rare exceptional cases.

The Vinyl Open Air impresses with its easy handling and robust construction at a moderate entry-level price. Depending on the requirements of the laboratory, further functions can be easily retrofitted.